

Elem



Ultimate Protection



INSTITUTIONS

Protection You Need



-  **PROTECT** classrooms and furniture from extreme weather
-  **SHIELD** your students and staff from harmful threats
-  **SECURE**, 24-hour daily, weekend, and extended holiday protection

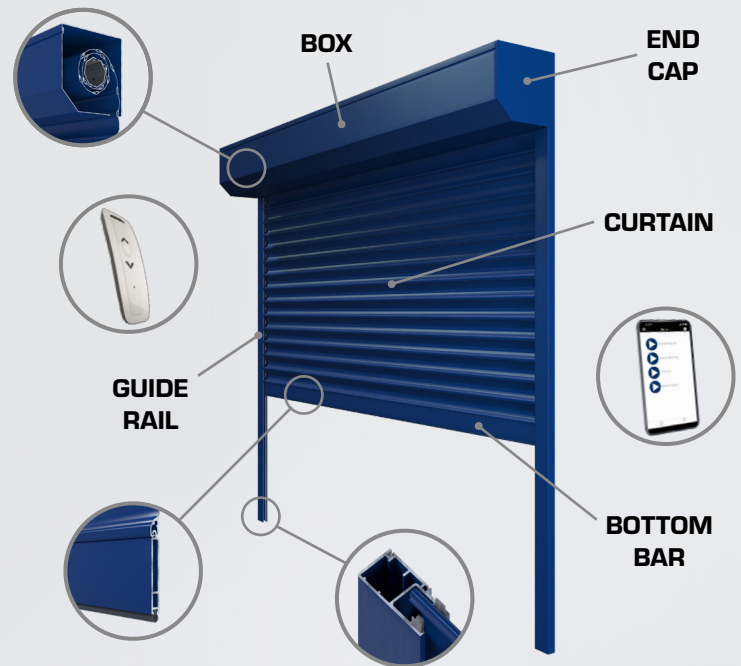
Security Rolling Shutters

OPERATION

- Spring assist manual or powered operation options
- Control effortlessly with a switch, remote, Wi-Fi, or an app
- Smooth operation with low maintenance design
- The curtain rolls into a compact coil allowing a minimal size and sleek box housing design
- Multiple features ensure secure protection from vandalism and force

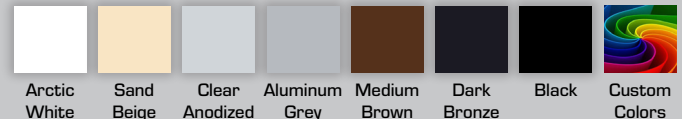
MATERIALS

- Minimal size, high-tech roll-formed aluminum box housing
- Durable frame resists forced entry and daily wear
- Commercial-grade aluminum - Environmentally friendly materials
- Multiple curtain strengths, designs, and colors exceed the requirements of any application
- High security that will enhance the aesthetics and function of schools and educational facilities
- Shutters provide additional energy savings during the winter and summer



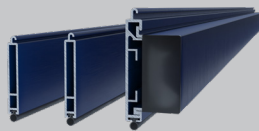
FRAME & CURTAIN COLOR OPTIONS

- Not all series are available in all colors; contact your dealer for options
- Additional charge for dark bronze, black, and custom colors



BOTTOM BAR OPTIONS

- 57 mm (2.25 in) or 60 mm (2.36 in) Standard Bottom Bars
- 75 mm (3 in) Heavy Duty Bottom Bar



1 SECURE

- Eliminating glass breakage, reducing ongoing maintenance costs
- Deters intruders, giving you absolute peace of mind after school hours
- Creates a fully secure and protected school at the press of a button

2 SHIELD

- Effortlessly creates a secure barrier protecting staff and students
- Provides a durable shield from extreme weather conditions
- Blocks damaging sunlight from fading carpet and school furniture

3 PROTECT

- Protects your school premises from active shooters and stop intruders
- Enjoy peace of mind by being able to "lockdown" immediately
- Protects school from crimes of opportunity with visible security

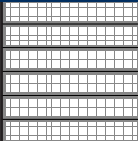


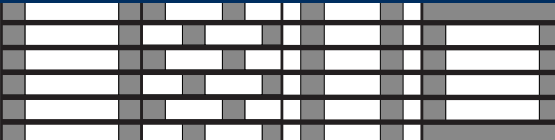
SHUTTER CURTAIN STYLES AND SIZING

Pentagon DefendaGuard curtain styles are finished in industry-leading coatings and provide options for visibility. Our engineered slats offer enhanced security and add to the visual appeal of your facility.



SOLID CURTAIN							
	Description	400*	440*	450	500	540	560
	The solid curtain is available in the 400*, 440*, 450, 500, and 560 series. These series provide a highly secure barrier.	Roll-formed aluminum with regular density foam filling	Roll-formed aluminum with ultra hard resin core	Double wall extruded aluminum	Roll-formed aluminum with regular density foam filling	Roll-formed aluminum with ultra hard resin core	Single wall extruded aluminum
	* Available with light slots						

PERFORATED CURTAIN			
	Description	561	562
	The perforated curtain is available in both the 561 and 562 series. This curtain allows light transfer through the shutter curtain and optimal airflow. The small perforations option is designed to provide an unobstructed view through the shutter. The large perforations option gives you the look of a "link and rod" grille door, with the advantage of having minimal moving parts.	Single wall extruded aluminum with small perforations	Single wall extruded aluminum with large perforations

PATTERNED CURTAIN		
	Description	530
	The patterned curtain is available using the 530 series in DefendaGuard. Clear anodized connector rods are used between each slat, adding valuable strength and visual appeal to the curtain. The curtain patterns we offer include clear, brick, straight, and window.	Clear polycarbonate / aluminum with curved design

BOTTOM BAR SIZING		
Description	STD Bottom Bar	HD Bottom Bar
The DefendaGuard system is compatible with the Standard Bottom Bar (two sizes) and the Heavy Duty Bottom Bar (one size). The Standard Bottom Bar is low profile and secure. The Heavy Duty Bottom Bar is extremely strong and durable.	2.25 in (57 mm) 2.36 in (60 mm)	3 in (75 mm)

GUIDE RAIL SIZING					
Description	53 mm	64 mm	66 mm	83 mm	83 mm - AnchorLoc
Five guide rail sizes are compatible with DefendaGuard. AnchorLoc secures the curtain to each guide rail.	2 in (53 mm)	2.5 in (64 mm)	2.6 in (66 mm)	3.25 in (83 mm)	3.25 in (83 mm)

SHUTTER AND CURTAIN SIZING					
Series	Guide Rail Sizes	Bottom Bar Sizes	Maximum Curtain Height	Maximum Curtain Width	Maximum Curtain Area
400	53 mm, 66 mm	STD 2.25 in (57 mm), HD 3 in (75 mm)	Up to 228 in (5800 mm)	Up to 228 in (5800 mm)	171 sq. ft (15.9 sq. m)
440	53 mm, 66 mm	STD 2.25 in (57 mm), HD 3 in (75 mm)	Up to 228 in (5800 mm)	Up to 228 in (5800 mm)	171 sq. ft (15.9 sq. m)
450	53 mm, 66 mm	STD 2.25 in (57 mm), HD 3 in (75 mm)	Up to 228 in (5800 mm)	Up to 228 in (5800 mm)	266 sq. ft (24.7 sq. m)
500	64 mm, 83 mm	STD 2.36 in (60 mm), HD 3 in (75 mm)	Up to 227 in (5770 mm)	Up to 228 in (5800 mm)	247 sq. ft (22.9 sq. m)
530	64 mm, 83 mm, 83 mm - AnchorLoc	STD 2.36 in (60 mm), HD 3 in (75 mm)	Up to 227 in (5770 mm)	Up to 228 in (5800 mm)	209 sq. ft (19.4 sq. m)
540	64 mm, 83 mm	STD 2.36 in (60 mm), HD 3 in (75 mm)	Up to 227 in (5770 mm)	Up to 228 in (5800 mm)	247 sq. ft (22.9 sq. m)
560	64 mm, 83 mm, 83 mm - AnchorLoc	STD 2.36 in (60 mm), HD 3 in (75 mm)	Up to 226 in (5750 mm)	Up to 300 in (7620 mm)	332 sq. ft (30.8 sq. m)
561	64 mm, 83 mm, 83 mm - AnchorLoc	STD 2.36 in (60 mm), HD 3 in (75 mm)	Up to 226 in (5750 mm)	Up to 300 in (7620 mm)	332 sq. ft (30.8 sq. m)
562	64 mm, 83 mm, 83 mm - AnchorLoc	STD 2.36 in (60 mm), HD 3 in (75 mm)	Up to 226 in (5750 mm)	Up to 300 in (7620 mm)	332 sq. ft (30.8 sq. m)