



DefendaGuard

BY PENTAGON

boutique

Security With Visibility



RETAIL | OFFICE

Solid Protection



PROTECT your merchandise after hours with visibility



SHIELD your valuable merchandise and glass from damage



SECURE your retail store from smash and grab theft

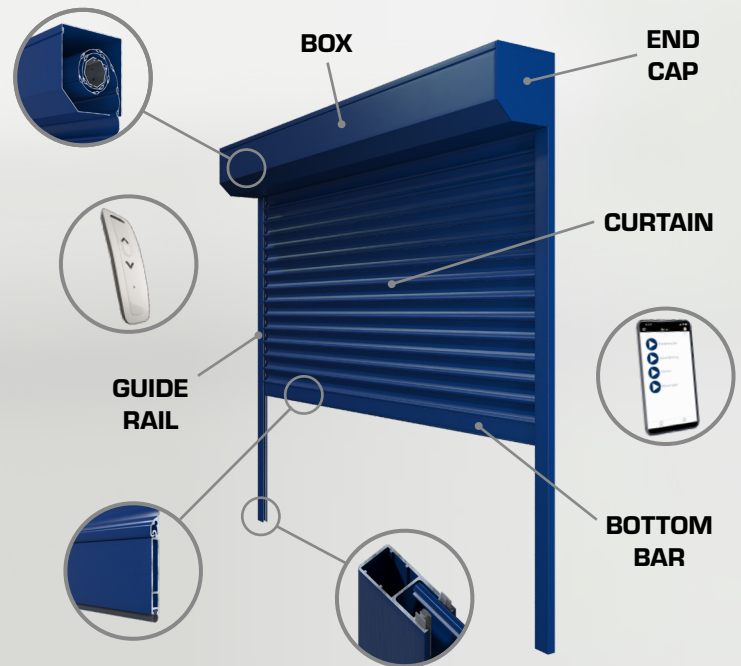
Security Rolling Shutters

OPERATION

- Spring assist manual or powered operation options
- Control effortlessly by switch, remote, Wi-Fi, or an app
- Smooth operation with low maintenance design
- The curtain rolls into a compact coil allowing a minimal size and sleek box housing design
- Multiple features ensure secured protection from vandalism and force

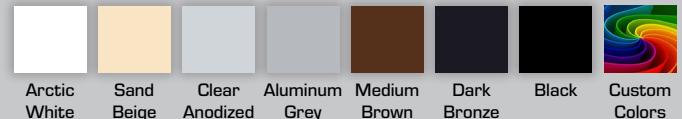
MATERIALS

- Minimal size, high-tech roll-formed aluminum box housing
- Durable frame resists forced entry and daily wear
- Commercial-grade aluminum - Environmentally friendly materials
- Multiple curtain strengths, designs, and colors exceed the requirements of any application
- High security that will enhance the aesthetics and function of your store or business premises
- Shutters provide additional energy savings during the winter and summer



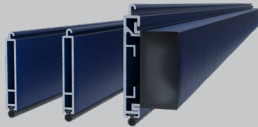
FRAME & CURTAIN COLOR OPTIONS

- Not all series are available in all colors; contact your dealer for options
- Additional charge for dark bronze, black, and custom colors



BOTTOM BAR OPTIONS

- 57 mm (2.25 in) or 60 mm (2.36 in) Standard Bottom Bars
- 75 mm (3 in) Heavy Duty Bottom Bar



1 SECURE

- Eliminate glass breakage, reducing ongoing maintenance costs
- Deters intruders, giving you absolute peace of mind after hours
- Make your business premises fully secure at the press of a button

2 SHIELD

- Effortlessly creates a secure barrier protecting your work environment
- Provides a durable shield from extreme weather conditions
- Can allow products to be displayed after hours for increased visibility

3 PROTECT

- Protect your business premises and products while stopping intruders
- Enjoy peace of mind by being able to "lock and leave"
- Protects you from crimes of opportunity with visible security



SHUTTER CURTAIN STYLES AND SIZING

Pentagon DefendaGuard curtain styles are finished in industry-leading coatings and provide options for visibility. Our engineered slats offer enhanced security and add to the visual appeal of your facility.



| SOLID CURTAIN | | | | | | | |
|---------------|---|--|---|-------------------------------|--|---|-------------------------------|
| | Description | 400* | 440* | 450 | 500 | 540 | 560 |
| | The solid curtain is available in the 400*, 440*, 450, 500, and 560 series. These series provide a highly secure barrier. | Roll-formed aluminum with regular density foam filling | Roll-formed aluminum with ultra hard resin core | Double wall extruded aluminum | Roll-formed aluminum with regular density foam filling | Roll-formed aluminum with ultra hard resin core | Single wall extruded aluminum |
| | * Available with light slots | | | | | | |

| PERFORATED CURTAIN | | | | |
|--------------------|--|---|---|---|
| | | Description | 561 | 562 |
| | | The perforated curtain is available in both the 561 and 562 series. This curtain allows light transfer through the shutter curtain and optimal airflow. The small perforations option is designed to provide an unobstructed view through the shutter. The large perforations option gives you the look of a "link and rod" grille door, with the advantage of having minimal moving parts. | Single wall extruded aluminum with small perforations | Single wall extruded aluminum with large perforations |

| PATTERNED CURTAIN | | |
|-------------------|---|---|
| | Description | 530 |
| | The patterned curtain is available using the 530 series in DefendaGuard. Clear anodized connector rods are used between each slat, adding valuable strength and visual appeal to the curtain. The curtain patterns we offer include clear, brick, straight, and window. | Clear polycarbonate / aluminum with curved design |

| BOTTOM BAR SIZING | | |
|--|------------------------------------|---------------|
| Description | STD Bottom Bar | HD Bottom Bar |
| The DefendaGuard system is compatible with the Standard Bottom Bar (two sizes) and the Heavy Duty Bottom Bar (one size). The Standard Bottom Bar is low profile and secure. The Heavy Duty Bottom Bar is extremely strong and durable. | 2.25 in (57 mm) 2.36 in (60 mm) | 3 in (75 mm) |

| GUIDE RAIL SIZING | | | | | |
|---|--------------|----------------|----------------|-----------------|-------------------|
| Description | 53 mm | 64 mm | 66 mm | 83 mm | 83 mm - AnchorLoc |
| Five guide rail sizes are compatible with DefendaGuard. AnchorLoc secures the curtain to each guide rail. | 2 in (53 mm) | 2.5 in (64 mm) | 2.6 in (66 mm) | 3.25 in (83 mm) | 3.25 in (83 mm) |

| SHUTTER AND CURTAIN SIZING | | | | | |
|----------------------------|---------------------------------|--------------------------------------|------------------------|------------------------|-------------------------|
| Series | Guide Rail Sizes | Bottom Bar Sizes | Maximum Curtain Height | Maximum Curtain Width | Maximum Curtain Area |
| 400 | 53 mm, 66 mm | STD 2.25 in (57 mm), HD 3 in (75 mm) | Up to 228 in (5800 mm) | Up to 228 in (5800 mm) | 171 sq. ft (15.9 sq. m) |
| 440 | 53 mm, 66 mm | STD 2.25 in (57 mm), HD 3 in (75 mm) | Up to 228 in (5800 mm) | Up to 228 in (5800 mm) | 171 sq. ft (15.9 sq. m) |
| 450 | 53 mm, 66 mm | STD 2.25 in (57 mm), HD 3 in (75 mm) | Up to 228 in (5800 mm) | Up to 228 in (5800 mm) | 266 sq. ft (24.7 sq. m) |
| 500 | 64 mm, 83 mm | STD 2.36 in (60 mm), HD 3 in (75 mm) | Up to 227 in (5770 mm) | Up to 228 in (5800 mm) | 247 sq. ft (22.9 sq. m) |
| 530 | 64 mm, 83 mm, 83 mm - AnchorLoc | STD 2.36 in (60 mm), HD 3 in (75 mm) | Up to 227 in (5770 mm) | Up to 228 in (5800 mm) | 209 sq. ft (19.4 sq. m) |
| 540 | 64 mm, 83 mm | STD 2.36 in (60 mm), HD 3 in (75 mm) | Up to 227 in (5770 mm) | Up to 228 in (5800 mm) | 247 sq. ft (22.9 sq. m) |
| 560 | 64 mm, 83 mm, 83 mm - AnchorLoc | STD 2.36 in (60 mm), HD 3 in (75 mm) | Up to 226 in (5750 mm) | Up to 300 in (7620 mm) | 332 sq. ft (30.8 sq. m) |
| 561 | 64 mm, 83 mm, 83 mm - AnchorLoc | STD 2.36 in (60 mm), HD 3 in (75 mm) | Up to 226 in (5750 mm) | Up to 300 in (7620 mm) | 332 sq. ft (30.8 sq. m) |
| 562 | 64 mm, 83 mm, 83 mm - AnchorLoc | STD 2.36 in (60 mm), HD 3 in (75 mm) | Up to 226 in (5750 mm) | Up to 300 in (7620 mm) | 332 sq. ft (30.8 sq. m) |